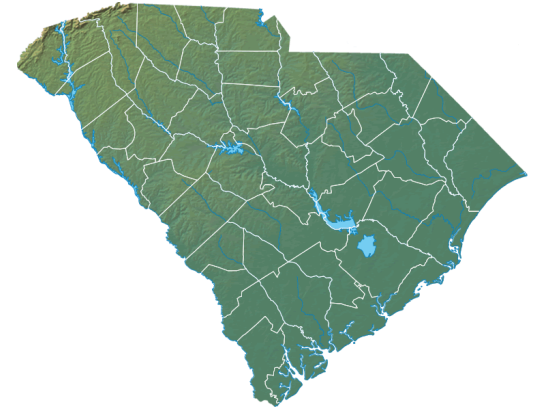


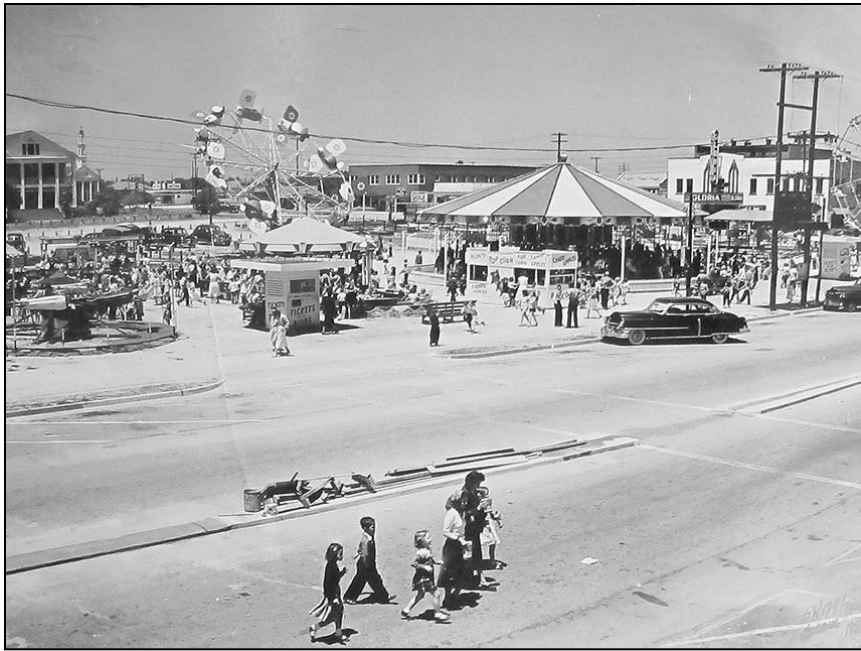
SCS  FEH  ME



South Carolina
Department of Insurance



- As with many other states with coastal exposure, South Carolina's population is increasing faster than the national average, especially along our coastline.
- Coastal residents make up one fourth of our statewide population.
- In fact, three of the fastest growing counties, Beaufort, Charleston, and Horry have experienced significant growth over the past fifty years.
- Between 2000 and 2010, Beaufort saw a 53.7% increase in the number of housing units, Charleston experienced a 20.5 % increase and Horry County increased their number of housing units by 52.3%.



1954, Ocean Drive, Myrtle Beach



Myrtle Beach Boardwalk

2013, Ocean Drive, Myrtle Beach



Myrtle Beach Post Hazel, 1954



Myrtle Beach Post Hugo, 1989

Impact of Hazel on Myrtle Beach:

- Winds of 130-150 mph. in Little River
- City of Myrtle Beach had gusts of 106 mph.
- Winds combined with a lunar tide produced devastating storm surge and destroyed 80% of all water front property from Little River to Pawleys Island.
- Interestingly, forecasts called for it to stay out at sea and possibly only brush the Carolina coastline.

Educate and Inform:

<p><i>ARE YOU PREPARED?</i> Hurricane Season June 1 - November 30 www. SCS▲FEHOME.com 803-737-6160</p>
<p><i>PLAN, PREPARE, PROTECT</i> Hurricane Season June 1 - November 30 www. SCS▲FEHOME.com 803-737-6160</p>

Utilize all methods of outreach and communication to include:

- Public Forums
- Homeowner's Association Meetings
- Provide Continuing Education Courses for Building Officials, Realtors , etc.
- Preparedness Expos

